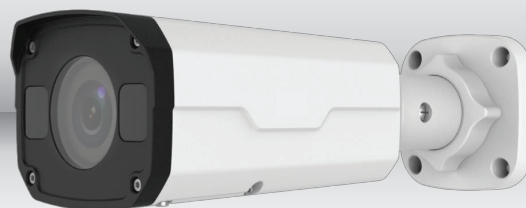


W25L-2812

IR NETWORK WEATHERPROOF CAMERA



KEY FEATURES

- Day/night functionality
- Smart IR, up to 30m (98 ft) IR distance
- IR anti-reflection window to increase the infrared transmittance
- 2D/3D DNR (Digital Noise Reduction)
- Ultra 265, H.265, H.264, MJPEG
- Triple streams
- ONVIF Conformance
- Wide temperature range: -30°C to 60°C
- Wide voltage range of $\pm 25\%$
- 3-Axis
- IK10 vandal resistant
- IP67

TECHNICAL SPECIFICATIONS

Sensor	1/2.7", 2 megapixel, progressive scan, CMOS
Lens	Varifocal 2.8mm~12mm
Min. Illumination	Color: 0.01 Lux (F1.6, AGC ON). 0 Lux with IR on
Shutter	Auto/Manual, 1~1/100000 s
Day/Night	IR-cut filter with auto switch (ICR)
IR	Up to 30m (98 ft) IR range
WDR	Digital WDR
Noise Reduction	2D/3D DNR
Max. Resolution	1920x1080
Video Compression	Ultra 265, H.265, H.264, MJPEG
H.264 code profile	Baseline profile, Main Profile, High Profile
Frame Rate	Main Stream : 2MP (1920x1080): Max. 30 fps Sub Stream : 720P (1280x720) :Max. 30 fps Third Stream : D1 (720x576): Max. 30 fps
Video Streaming	Triple
HLC & BLC	Supported
ROI	Up to 2 areas
OSD	Up to 4 OSDs
Motion Detection	Up to 4 areas
Privacy Mask	Up to 8 areas
Protocols	IPv4, IGMP, ICMP, ARP, TCP, UDP, DHCP, RTP, RTSP, RTCP, DNS, DDNS, NTP, FTP, UPnP, HTTP, HTTPS, SMTP, SSL
Compatible Integration	ONVIF, API
Network	1 RJ45 100M Base-TX Ethernet
Edge Storage	Micro SD, up to 128GB
Power Usage	12 V DC, or PoE (IEEE802.3 af)
Power Consumption	Max 6.5 W
Dimensions	253.4 mm x 86 mm x 71.7 mm
Weight	1.00 kg (2.2 lb)
Working Environment	-30°C ~ +60°C (-22°F ~ 140°F), Humidity : 10%~95% RH (non-condensing)
Rating	IP67
Vandal Resistant	IK10

