

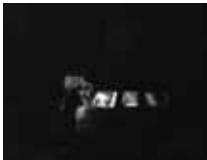


KEY FEATURES

- 1/3 inch Sony Super HAD II CCD
- 2D Noise Reduction (2DNR)
- 600TVL [Color] / 650TVL [B/W]
- Day & Night
- Built in OSD Menu
- IR Cut Filter (IRC)
- Second Video Port
- Built in 24 nos IR LED
- 4 - 9mm lens
- Min illumination 0Lux-15m [IR LED On]
- 12VDC
- 3-Axis

INFRA RED ILLUMINATION

The camera is equipped with IR LEDs to capture clear image even in total darkness



LED OFF



LED ON

DAY & NIGHT



Day



Night

It enables the camera to produce a very natural coloration at daytime and to greatly improve the sensitivity and resolution by converting the image to a colour signal removed B/W image at night.

2DNR (2D Noise Reduction)



Normal Camera



2DNR Camera

With 2D Noise Reduction embedded, it produces extremely clear picture quality, even under low light condition for 24/7 surveillance.

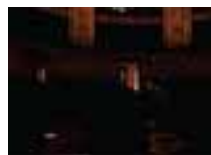
TECHNICAL SPECIFICATIONS

virtue

| | |
|--------------------------------|--|
| RESOLUTION | 600TVL (Color) / 650TVL (B/W) |
| EFFECTIVE PIXEL | NTSC: 768 (h) x 494 (v) PAL: 752 (h) x 582 (v) |
| IMAGE DEVICE | 1/3" Sony Super HAD II CCD |
| MINIMUM ILLUMINATION | 0Lux - 15m [IR LED On] |
| ELECTRONIC SHUTTER | NTSC: 1/60~1/100,000 sec. PAL: 1/50~1/100,000 sec. |
| LENS | 4-9mm |
| SYNCHRONIZATION | Internal |
| SCANNING SYSTEM | NTSC: 525 Lines PAL: 625 Lines 2:1 Interlaced |
| S/N RATIO | 50dB |
| VIDEO OUTPUT | 1.0Vp-p Composite. 75 Ω |
| IR VISIBILITY RANGE | 15m |
| IR LED | 24 nos |
| IR CUT FILTER | YES |
| OPERATING TEMPERATURE | 14°K ~ 122°F (-10°C ~ +50°C) |
| HUMIDITY | Within 90% RH |
| POWER SUPPLY | 12VDC |
| POWER CONSUMPTION | 140mA, max: 320mA [IR LED On] |
| DIMENSIONS | 120mm(Ø) x 81.9mm(l) |
| OSD MENU | |
| WIDE DYNAMIC RANGE [WDR] | NO |
| HIGHLIGHT SUPP. COMPENSATION | YES |
| DIGITAL NOISE REDUCTION [DNR] | Off / On [User selectable by OSD] |
| DIGITAL IMAGE STABILIZER [DIS] | NO |
| DIGITAL SLOW SHUTTER [DSS] | NO |
| GAIN CONTROL | Auto / Maximum by OSD |
| BACK LIGHT COMPENSATION [BLC] | YES |
| WHITE BALANCE | ATW1 / MANUAL / AWC > SET / ATW2 (ATW1: 2,300 ~ 9,500°K / ATW2: 2,000~11,000°K) |
| MOTION DETECTION | NO |
| DIGITAL ZOOM | NO |
| PRIVACY MASKING | NO |

IR CUT FILTER (IRC)

The image at daytime displays as True Colour with IR Cut Filter attached and turns to clear B/W (colour signal removal) mode at night (Day/Night). With IRC, it comes to IR sensitive that enables the camera to view the scene at low light.



No IR sensitive



Image captured at low light under IR