

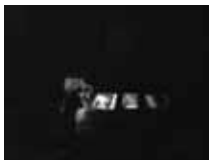


KEY FEATURES

- 1/3 inch Sony Super HAD II CCD
- 2D Noise Reduction (2DNR)
- 600TVL [Color] / 650TVL [B/W]
- Day & Night
- Built in 24 nos IR LED
- Built in OSD Menu
- IR Cut Filter (IRC)
- Second Video Port
- 4.3mm lens
- Min illumination 0Lux-15m [IR LED On]
- 12VDC
- 3-Axis

INFRA RED ILLUMINATION

The camera is equipped with IR LEDs to capture clear image even in total darkness



LED OFF



LED ON

DAY & NIGHT



Day



Night

It enables the camera to produce a very natural coloration at daytime and to greatly improve the sensitivity and resolution by converting the image to a colour signal removed B/W image at night.

2DNR (2D Noise Reduction)



Normal Camera



2DNR Camera

With 2D Noise Reduction embedded, it produces extremely clear picture quality, even under low light condition for 24/7 surveillance.

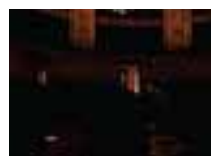
TECHNICAL SPECIFICATIONS

virtue

RESOLUTION	600TVL (Color) / 650TVL (B/W)
EFFECTIVE PIXEL	NTSC: 768 (h) x 494 (v) PAL: 752 (h) x 582 (v)
IMAGE DEVICE	1/3" Sony Super HAD II CCD
MINIMUM ILLUMINATION	0Lux - 15m [IR LED On]
ELECTRONIC SHUTTER	NTSC: 1/60~1/100,000 sec. PAL: 1/50~1/100,000 sec.
LENS TYPE	4.3mm
SYNCHRONIZATION	Internal
SCANNING SYSTEM	NTSC: 525 Lines PAL: 625 Lines 2:1 Interlaced
S/N RATIO	50dB
VIDEO OUTPUT	1.0Vp-p Composite. 75 Ω
IR VISIBILITY RANGE	15m
IR LED	24 nos
IR CUT FILTER	YES
OPERATING TEMPERATURE	14°K ~ 122°F (-10°C ~ +50°C)
HUMIDITY	Within 90% RH
POWER SUPPLY	12VDC
POWER CONSUMPTION	140mA, max: 320mA [IR LED On]
DIMENSIONS	120mm(Ø) x 81.9mm(l)
OSD MENU	
WIDE DYNAMIC RANGE [WDR]	NO
HIGHLIGHT SUPP. COMPENSATION	YES
DIGITAL NOISE REDUCTION [DNR]	Off / On [User selectable by OSD]
DIGITAL IMAGE STABILIZER [DIS]	NO
DIGITAL SLOW SHUTTER [DSS]	NO
GAIN CONTROL	Auto / Maximum by OSD
BACK LIGHT COMPENSATION [BLC]	YES
WHITE BALANCE	ATW1 / MANUAL / AWC > SET / ATW2 (ATW1: 2,300 ~ 9,500°K / ATW2: 2,000~11,000°K)
MOTION DETECTION	NO
DIGITAL ZOOM	NO
PRIVACY MASKING	NO

IR CUT FILTER (IRC)

The image at daytime displays as True Colour with IR Cut Filter attached and turns to clear B/W (colour signal removal) mode at night (Day/Night). With IRC, it comes to IR sensitive that enables the camera to view the scene at low light.



No IR sensitive



Image captured at low light under IR