

WV580IR

VIRTUE SERIES

INFRA RED WEATHERPROOF HD CAMERA
DAY & NIGHT, 120M



KEY FEATURES

- 1/3 inch Sony 960H Exview II + Sony EFFIO-P DSP
- Super Wide Dynamic Range (sWDR)
- 650TV Lines (Color) / 700TV Lines (B/W)
- True Day & Night
- 2D/3D Noise Reduction (2D/3DNR)
- IR Cut Removeable [ICR]
- Digital zoom (3x)
- Optic photo-sensor
- Outdoor application
- 10-bit digital color reproduction
- External lens adjustment
- 12IR LEDs & 2IR lamps
- Sunshield and mounting bracket
- Non-polarity power input
- Min illumination 0.0lux - 120m [IR LED On]
- Varifocal lens 7.5-50mm
- IP67 Weatherproof
- 24VDC/24VAC



Day & Night



Infrared



OSD Menu



WDR



IR Cut Filter



Digital Zoom



Weatherproof



Varifocal Lens

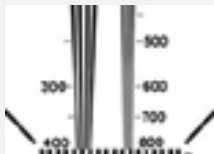


Digital Noise Reduction

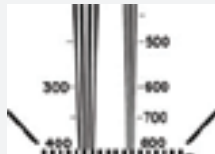
FEATURES IMAGES

HIGH RESOLUTION (EFFIO)

The product portfolio reproduces 650TVL at daytime and 700TVL at nighttime. The unique signal processing technology makes the camera possible to reproduce maximum-optimized output signal frequency.



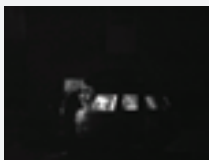
Conventional



High Definition

INFRARED ILLUMINATION

The camera is equipped with IR LEDs to capture clear image even in total darkness



LED OFF



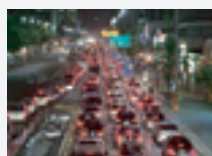
LED ON

2D/3DNR (3D Noise Reduction)

With 3D Noise Reduction (3DNR) embedded, it produces extremely clear picture quality, even under low light condition for 24/7 surveillance.



Normal Camera



3DNR Camera

TECHNICAL SPECIFICATIONS

Resolution	650TV Lines (Color) / 700TV Lines (B/W)
Image Sensor	1/3" SONY 960H Exview II + SONY EFFIO-P DSP
Scanning System	2:1 Interlace
Effective Pixel	NTSC: 768 (h) x 494 (v) PAL: 752 (h) x 582 (v)
Min. Illumination	0Lux (IR On)
Electronic Shutter	NTSC: 1/60~100,000 sec. PAL: 1/50~1/100,000 sec.
Lens Type	Varifocal Lens 7.5-50mm
S/N Ratio	≥50 dB (AGC Off)
Video Output	(15.625KHz / Vertical : 50.00Hz PAL)
Gamma Correction	0.45
Frequency	Horizontal : (15.734KHz / Vertical : 59.94Hz NTSC), (15.625KHz / Vertical : 50.00Hz PAL)
Synchronization	Internal
IR LED No	12 nos
IR Visibility Range	120m
IR Cut Filter	Yes
Power Supply	12VDC, 12DVC/24VAC DUAL POWER
Power Consumption	1100mA
Work Humidity	Within 90% RH
Operation Temperature	-10°C ~ +50°C [14°F ~ 122°F]
Dimension (w x l x h)	120 mm x 172 mm x 294.3 mm
Weight	4000g

OSD MENU

Wide Dynamic Range [WDR]	Off /On [User selectable by OSD]
Highlight Supp. Compensation	No
Digital Noise Reduction [DNR]	Off /On
Digital Image Stabilizer [DIS]	Yes
Digital Slow Shutter [DSS]	Off / 2x ~ 512x
Back Light Compensation [BLC]	Yes
White Balance	800°K ~ 10,500°K Auto AYW / AWB / MANUAL /AWC
Motion Detection	On / Off [4 Zone setting available]
Digital Zoom	Off / On (X1 ~ X32)
Privacy Masking	8 Zone